



NOBLES COUNTY INTEGRATION COLLABORATIVE

Adrian Ellsworth Fulda Heron Lake-Okabena Round Lake-Brewster Worthington

1450 College Way, Worthington, MN 56187 * 507-376-3300 * www.isd518.net/ncic

The mission of the Nobles County Integration Collaborative, a consortium of adjacent school districts, is to promote student success and community acceptance of cultural differences by providing opportunities for students, families and staff from diverse backgrounds to learn from and with one another.

FY 2015 Year-end Report

For

District #6085-50

Nobles County Integration Collaborative

117 11th Avenue

Worthington, MN 56187

Submitted by:

Thi Synavone, Nobles County Integration Collaborative Coordinator

Thi.Synavone@isd518.net

Soom Chandaswang, Integration Program Manager

Soom.Chandaswang@isd518.net

Patrick Morpew, ISD 518 Accountant/Fiscal Agent

Pat.Morpew@isd518.net

October 2015



NOBLES COUNTY INTEGRATION COLLABORATIVE

Adrian Ellsworth Fulda Heron Lake-Okabena Round Lake-Brewster Worthington

1450 College Way, Worthington, MN 56187 * 507-376-3300 * www.isd518.net/ncic

This report will share information regarding the work of the Nobles County Integration Collaborative (NCIC) during fiscal year 2015. It provides detailed information regarding NCIC leadership, program offerings, program enrollments and program evaluations.

Leadership and Oversight

Nobles County Integration Collaborative strives to gain input from the Collaborative Council and area residents regarding program direction. Volunteers and staff work together to implement quality programs. The Joint Powers Board and staff work together to ensure fiscal responsibility and transparency. The Collaborative Council and Joint Powers Board met on the first Monday of alternating months throughout the year (August, October, December, February, April and June).

The members of the 2014-2015 Collaborative Council and Joint Powers Board are shown in the table below.

JPB	Name	Last Name	City	State	Zip Code	Phone #	Email	Term Exp.	District
	Luther	Onken	Fulda	MN	56131	507-425-2514	lonken@fos.mntm.org	Facilitator	Admin
1	Lisa	Kruger	Adrian	MN	56110	507-483-2937	lkruger23@gmail.com	appointed	Adrian
2	Angie	Boyenga	Ellsworth	MN	56129	712-470-1613	boyenga@mvtvwireless.com	appointed	Ellsworth
3	Stan	Kramer	Fulda	MN	56131	507-425-2946	bskkkk@swwnet.com	appointed	Fulda
4	Jeanie	Rasche	Heron Lake	MN	56137	507-381-7262	raschej@centurytel.net	appointed	HL-O
5	Diane	Larson	Round Lake	MN	56167	507-945-8420	diane@ellcom.us	appointed	RL-B
6	Stephen	Schnieder	Worthington	MN	56187	507-376-3837	sschnieder@co.nobles.mn.us	appointed	Worthington
7	Lakeyta	Potter	Worthington	MN	56187	507-727-1134	lakeyta.potter@isd518.net	16-Jan	CC Rep
8	Rhonda	Groen	Ellsworth	MN	56129	507-967-2475	rsgroen@yahoo.com	16-Jan	CC Rep
9	Jorge	Lopez	Worthington	MN	56187	507-372-4583	jlopez@swmnhp.org	16-Jan	CC Rep
CC	Name	Last Name	City	State	Zip	Phone #	Email	Term Exp.	District
1	John	Willey	Ellsworth	MN	56129	507-967-2242	john.willey@ellsworth.mntm.org	Ellsworth	Admin
2	Roger	Graff	Adrian	MN	56110	507-483-2266	r.graff@isd511.net	Adrian	Admin
3	Ray	Hassing	Brewster	MN	56119	507-842-5951	r.hassing@rlb.mntm.org	Round Lake-Brewster	Admin
4	Luther	Onken	Fulda	MN	56131	507-425-2514	lonken@fos.mntm.org	Fulda	Admin
5	Sharon	Johnson	Worthington	MN	56187	507-372-1200	sharon.johnson@isd518.net	Worthington	Admin
6	Paul	Bang	Okabena	MN	56161	507-853-4507	pbang@isd330.org	HL-O	Admin
7	Loy	Woelber	Okabena	MN	56161	507-843-4507	lwoelber@mntm.org	HL-O	Admin
8	Morde	Cai Apolo	Worthington	MN	56187	507-343-0190	mordec.ai.apolo@yahoo.com	16-Jan	At-Large
9	Chelsea	Wintz	Round Lake	MN	56167	507-360-0427	chelsea.wintz@isd518.net	16-Jan	At-Large
10	Semere	Abrha	Worthington	MN	56187	507-360-8123	semere_byn@yahoo.com	16-Jan	At-Large
11	America	Voss	Worthington	MN	56187	507-370-2417	America_vergara@hotmail.com	17-Jan	At-Large
12	Jay	Vargas	Worthington	MN	56187	956-451-7117	jay.vargas@mnwest.edu	16-Jan	At-Large
13	Jorge	Lopez	Worthington	MN	56187	507-372-4583	jlopez@swmnhp.org	16-Jan	At-Large
14	Scott	Barber	Worthington	MN	56187	507-350-0051	scottbarber@graceonline.net	16-Jan	At-Large
15	Jerry	Perkins	Worthington	MN	56187	507-376-4792	itperkins@frontiernet.net	17-Jan	At-Large
16	Lakeyta	Potter	Worthington	MN	56187	507-727-1134	lakeyta.potter@isd518.net	16-Jan	At-Large
17	Luis	Vargas	Worthington	MN	56187	507-341-0403	frluisvargasdw@gmail.com	16-Jan	At-Large
18	Selvin	Puac	Worthington	MN	56187	507-952-2302	rodri030@umn.edu	17-Jan	At-Large
19	Tim	Christensen	Luverne	MN	56156	507-483-2232	t.christensen@isd511.net		Adrian Comm
20	Marilyn	Hartzler	Brewster	MN	56119	507-842-9901	mhartzler@live.com		Brewster Comm
21	Rhonda	Groen	Ellsworth	MN	56129	507-967-2475	rsgroen@yahoo.com		Ellsworth Comm
22	Jason	Appel	Fulda	MN	56131	507-360-1480	jason513@centurytel.net		Fulda Comm
23	Robyn	Gunther	Heron Lake	MN	56137	507-329-7866	robyn.gunther@isd330.org		HL-O Comm
24	Trevor	Wintz	Round Lake	MN	56167	507-360-0427			RL Comm
25	Loany	Flores	Worthington	MN	56187	507-295-6092	loanyflores@gmail.com		Worthington Comm



NOBLES COUNTY INTEGRATION COLLABORATIVE

Adrian Ellsworth Fulda Heron Lake-Okabena Round Lake-Brewster Worthington

1450 College Way, Worthington, MN 56187 * 507-376-3300 * www.isd518.net/ncic

Program Goals/Outcomes

The Nobles County Integration Collaborative (NCIC) has five stated goal areas in its Integration Plan. These five goal areas are:

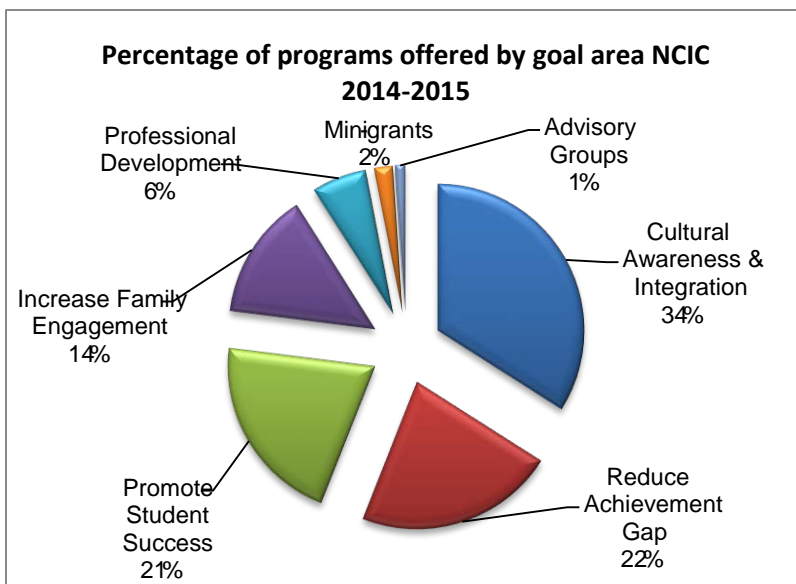
1. **Increase Cultural Awareness and Integration:** To provide a wide variety of opportunities to increase cultural awareness and integration, make schools more welcoming, and bring together diverse people in pursuit of common goals.
2. **Reduce Achievement Gaps:** Implement strategies and interventions that increase achievement of protected class students and reduce achievement gaps.
3. **Promote Student Success:** Foster student success and learning through innovation out-of-school time initiatives designed to remove barriers, increase access to opportunities, develop life skills, and emphasize the importance of education in life.
4. **Increase Family Engagement:** Increase the involvement of parents and family members in the education of their children and increase the support provided to families who do not have previous experiences with U.S. systems.
5. **Provide Professional Development:** Provide staff development opportunities for school personnel and other adult residents that increase cultural competence and focus on increasing the achievement of students of color and low-income students.

Program distribution by Goal Area

The graph to the right shows that Cultural Awareness and Integration (34%) and Promoting Student Success (22%) and Reduce Achievement Gap (21%) have the highest percentage. Cultural Awareness and

Integration used to be the main focus, but since the focus has shifted to Reduce Achievement gap and the area of Promoting Student Success. The area of Reduce Achievement gap during FY15 is 22%, a slight increase compared to last fiscal year of 16%. Please note that there is a balance between the classes offered across all goal areas. The Nobles County Integration Collaborative Council works to ensure a balanced approach to meeting its mission of cultural integration and student success in its annual programming. *During fiscal year 2015,*

Nobles County Integration Collaborative coordinated 141 programs, compared to 136 programs held in the previous fiscal year. The number of programs slightly increased this year.



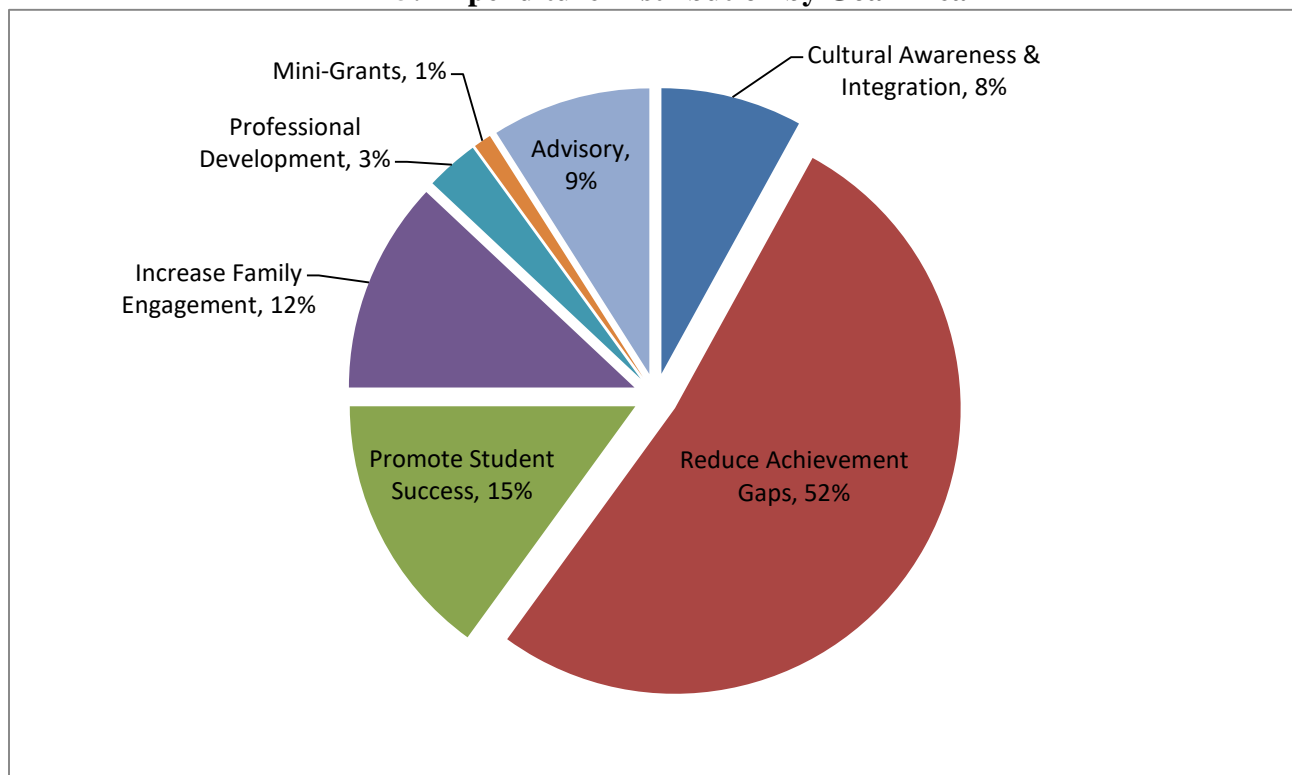


NOBLES COUNTY INTEGRATION COLLABORATIVE

Adrian Ellsworth Fulda Heron Lake-Okabena Round Lake-Brewster Worthington

1450 College Way, Worthington, MN 56187 * 507-376-3300 * www.isd518.net/ncic

FY 15: Expenditure Distribution by Goal Area



Enrollment Information

The number of participants in each goal area varies. The largest number of participants has consistently been in the Cultural Awareness/Integration goal area because so many of the programs are open to the public or serve an entire grade level from all member school districts. The public opportunities attract large audiences and are a good way for us to connect with people and draw them in to more intensive educational programs related to cultural integration and intercultural development. The number of programs and participants per goal area for 2014-2015 is shown in the table and graph below. Some participation numbers were estimated because registration or tickets were not required.

The program participants during 2014-2015 was 26,853, including both students and staff. In this number there is some duplication of individual people who participated in multiple programs. We do not have the capacity to track unduplicated enrollments at this time.

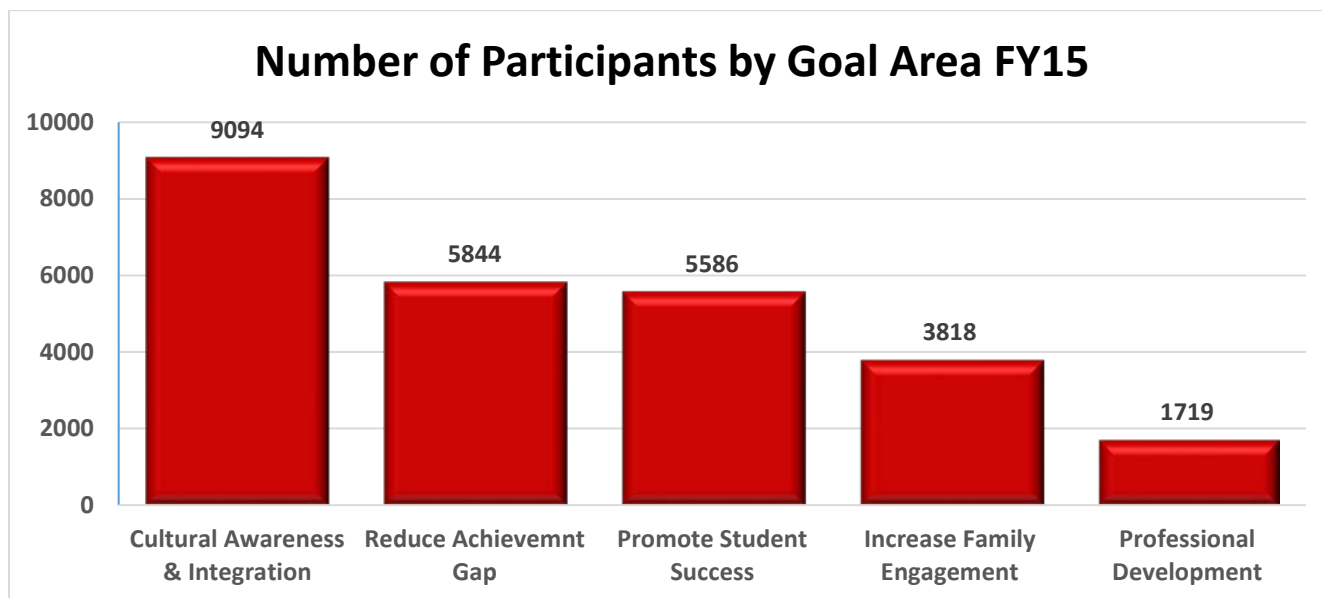
Even though NCIC has shifted its focus more toward the Reducing the Achievement Gap goal area, the highest number of enrollments was in the Cultural Awareness/Integration goal area. Similar to last year, the increase was largely due to the attendance at the International Festival.



NOBLES COUNTY INTEGRATION COLLABORATIVE

Adrian Ellsworth Fulda Heron Lake-Okabena Round Lake-Brewster Worthington

1450 College Way, Worthington, MN 56187 * 507-376-3300 * www.isd518.net/ncic



Enrollment Comparison between Racially Isolated District and Adjacent Member Districts

In the Nobles County Integration Collaborative area, Worthington, the racially isolated school district is the largest district. Brewster's school district is now identified as a racially isolated district due to their increased in enrollment of diverse students. The K-12 enrollments for fiscal year 2015 are shown in the table below.

K-12 Enrollment by District

Adrian	Round Lake-Brewster	Ellsworth	Fulda	Heron Lake-Okabena	Worthington
571	172	144	341	309	2,908

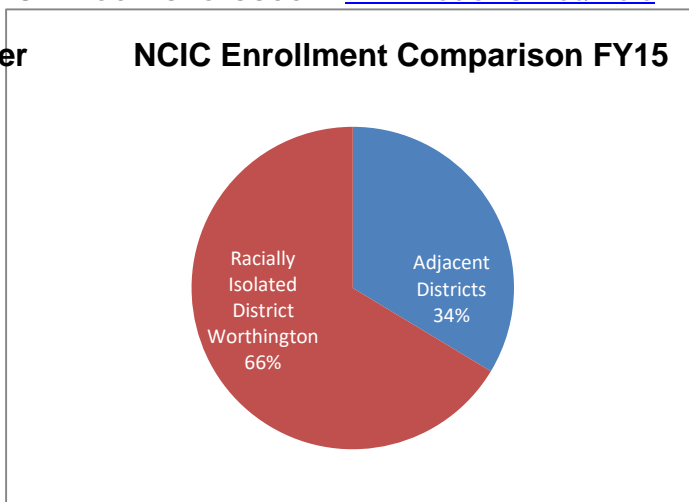
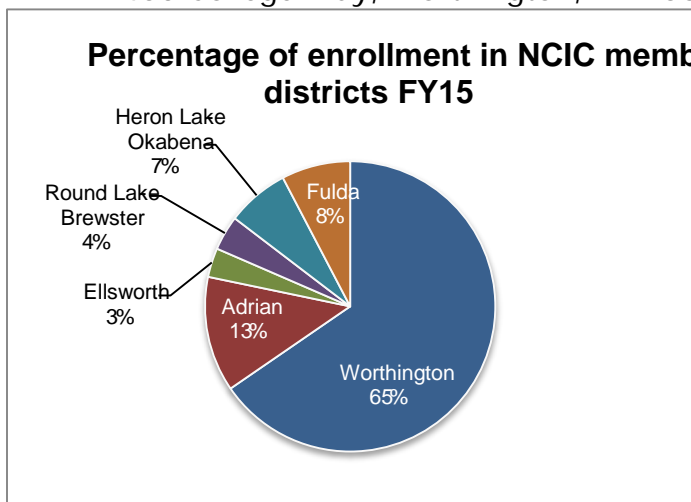
Each year, NCIC tracks the enrollments in its programs to compare the percentage of participation by individuals from the racially isolated district (Worthington) compared to the enrollments by the adjacent member districts (Adrian, Round Lake-Brewster, Ellsworth, Fulda and Heron Lake-Okabena). Ideally, we would like to see the participation in NCIC programs be proportionate to K-12 enrollments in the member districts.



NOBLES COUNTY INTEGRATION COLLABORATIVE

Adrian Ellsworth Fulda Heron Lake-Okabena Round Lake-Brewster Worthington

1450 College Way, Worthington, MN 56187 * 507-376-3300 * www.isd518.net/ncic



As you look at the graphs you can see that 35% of the total the K-12 enrollments are from adjacent districts, while Worthington, the racially isolated district, comprises 65% of the total enrollments. For the enrollments in NCIC programs during fiscal year 2015, 34% of the enrollments were from adjacent districts and 66% were from the racially isolated district. As you look at the charts, you can see that the NCIC enrollment percentages have a 1% difference from the overall school district enrollment percentages. Looking at this data shows that NCIC should continue to seek increased participation by residents in the adjacent districts. However, the focus of NCIC has shifted toward closing the Achievement Gaps, it is not surprising that the enrollments from the racially isolated district (Worthington) constitute a higher percentage of the overall NCIC enrollments, because there is a significantly higher number of students who are struggling academically in Worthington, compared to the smaller adjacent districts.

5-year Enrollment Data

Overall, the participation in programs sponsored by NCIC continues to increase. The table below shows the number of programs and enrollments for the last five years. The increase was steady over four years. Some enrollment slightly decreased from FY11 due to the fact that NCIC was only granted one AmeriCorps Promise Fellow and the state shut down.

Program Year	# of Programs	# of Enrollments
2009-2010	85	16,365
2010-2011	93	24,438
2011-2012	116	20,880
2013-2014	136	26,235
2014-2015	141	26,853



NOBLES COUNTY INTEGRATION COLLABORATIVE

Adrian Ellsworth Fulda Heron Lake-Okabena Round Lake-Brewster Worthington

1450 College Way, Worthington, MN 56187 * 507-376-3300 * www.isd518.net/ncic

Overall, the program participation in programs offered through NCIC has been very strong. We are pleased with the way that the schools collaborate on grade level programs. We appreciate that we have many positive community partners who work with us to maximize resources and avoid duplication of effort. Some of our key partners during FY 15 were: Minnesota West Community & Technical College, University of Minnesota Extension Service and Youth Work Institute, Nobles County Library, Blandin Foundation: Minnesota Intelligent Rural Communities grant, Worthington Area Chamber of Commerce, and the Cultural Awareness Organization, We Care Daycare, Kids R It and Minnesota Alliance With Youth. There probably others that I have inadvertently missed; if so, we apologize to them because we truly appreciate community support and collaboration!

FY 15 Highlights El Sistema: Imagine



NCIC initiated a multi-district music program called El Sistema Imagine this year. Music instructors and students from multiple member districts participated in this afterschool program throughout the school year. Additionally, NCIC, in conjunction with the MN Opera, hosted Opera Camp. All NCIC member districts were invited to be a part of this program. The opera was based on a children's book, "Five Nice Mice," participants had

an opportunity to create their own original opera and which they staged, and performed at NCIC's annual meeting, different schools, the International Festival. All together there were 25 students and 6 staff that participated.

Out-of-School-Time Programs

Throughout the school year NCIC coordinates a variety of weekly programs for secondary students. These programs focus on academic achievement, civic engagement, college & career readiness, cultural competency and leadership development. Students from these programs had the opportunity to participate in a service learning program in the spring as well. NCIC partnered up with Students Today Leaders Forever (STLF), an organization based out of Minneapolis, MN. This group is led by an optimistic group of students who engage in servant leadership to create positive life experiences. As the participants traveled from Worthington, MN to Chicago, IL, they engaged in community service projects and visited colleges. Every night the participants did



reflections on the activities. Students were exposed to different cities, diverse people, and a wide range of issues within each community. Participants took what they learned and committed to action within themselves, in their lives, and with their own communities. 36 students and 3 staff participated.