



ics CONSULTING, INC



ISD 518 – Worthington Public Schools



NEW ALC / GYMNASTICS FACILITY



ics | CONSULTING, INC

Project Overview

- New ALC Facility for 140 students with gymnastics complex included
- Schedule:
 - » End of DD: October 2017
 - » End of CD: December 2017
 - » Bidding: January 2017
 - » End of Construction: Early 2019





ics | CONSULTING, INC

Guiding Principles

ALC and Gymnastics

- The design will provide a variety of **flexible** spaces to **support** staff, student athletes and the community to encourage **collaboration** and foster connections.
- The building will include **multipurpose** spaces for social events, large and small for the entire community.
- The design will provide a **safe and secure** environment while maintaining an inviting and friendly atmosphere.
- The campus will be designed for easy navigation, circulation, and access.
- There should be designed elements that allow for recognition of student accomplishment and culture.





ics | CONSULTING, INC

Guiding Principles (Cont.)

ALC and Gymnastics

- The classroom shall be **organized around a learning commons** to support different teaching and learning styles and foster **collaboration**.
- The classrooms shall have **transparency** to the learning commons for an open and welcoming atmosphere, to create visual connectivity and promote supervision.
- The design will support and enhance **student choice** of learning environment.
- The building will be a source of pride for the community, both functionally and aesthetically, and represent a good fiscal investment.





ics | CONSULTING, INC

Criteria (Cont.)

ALC and Gymnastics

- There will be a shared Entry/Commons between the ALC and gymnastics spaces with the ability to separate them when needed.
- Administration will be located adjacent and connected to a **secure** main entrance.
- The commons and gymnasium should be located for **easy after-hours use**.
- The 7th & 8th grade classrooms should be located near the main office.
- There shall be a combined staff lounge/workroom in the administration area.





ics | CONSULTING, INC

Criteria (Continued)

ALC and Gymnastics

- The design shall include opportunities for outdoor activity for students.
- **Technology should be incorporated throughout** in order to foster innovative learning.
- The building will include a **flexible classroom** to accommodate changes in enrollment and curriculum.
- There will be a central receiving entrance for all building deliveries.
- There will be restrooms dispersed throughout the building that are easy to supervise.





ics | CONSULTING, INC

Criteria

Gymnastics

- The design will provide a **secure secondary entry** for everyday use.
- The team rooms should have a single restroom and support meeting area for video playback. The home team room should have approx. 30 full size lockers.
- The design will integrate opportunities for current and future technology needs.
- There shall be designated areas for storage within the facility.
- There shall be a multi-functional office space for judges and events.
- **The Foam Pit should be arranged for use by all apparatuses.**
- The balcony layout will maximize the amount of spectator seating.
- Incorporate **natural daylight** by use of clerestory windows.
- Maximize wall space for wall mounted equipment.





ics CONSULTING, INC



Site Plan - Draft



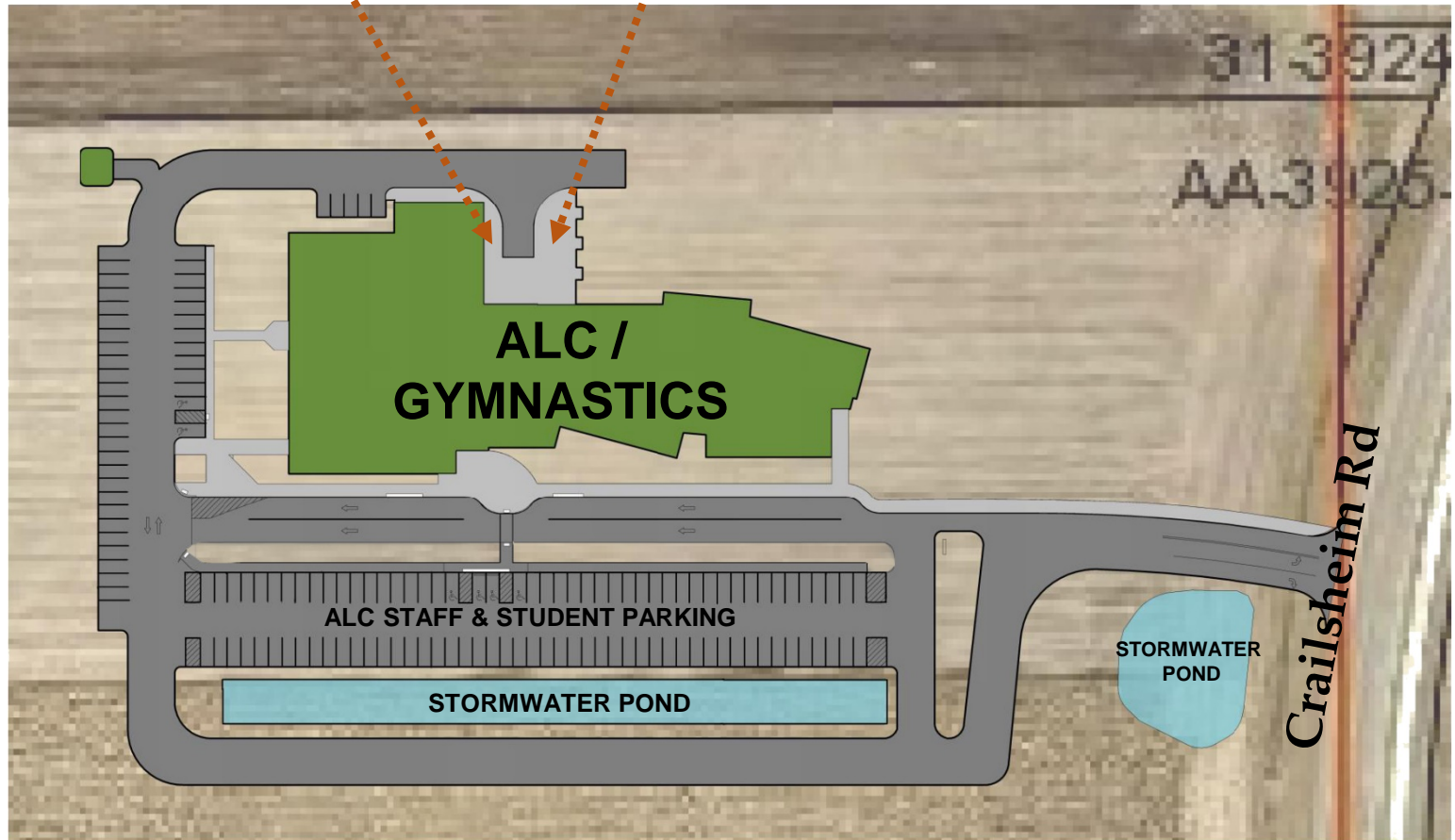


ics CONSULTING, INC

Proposed Site Plan



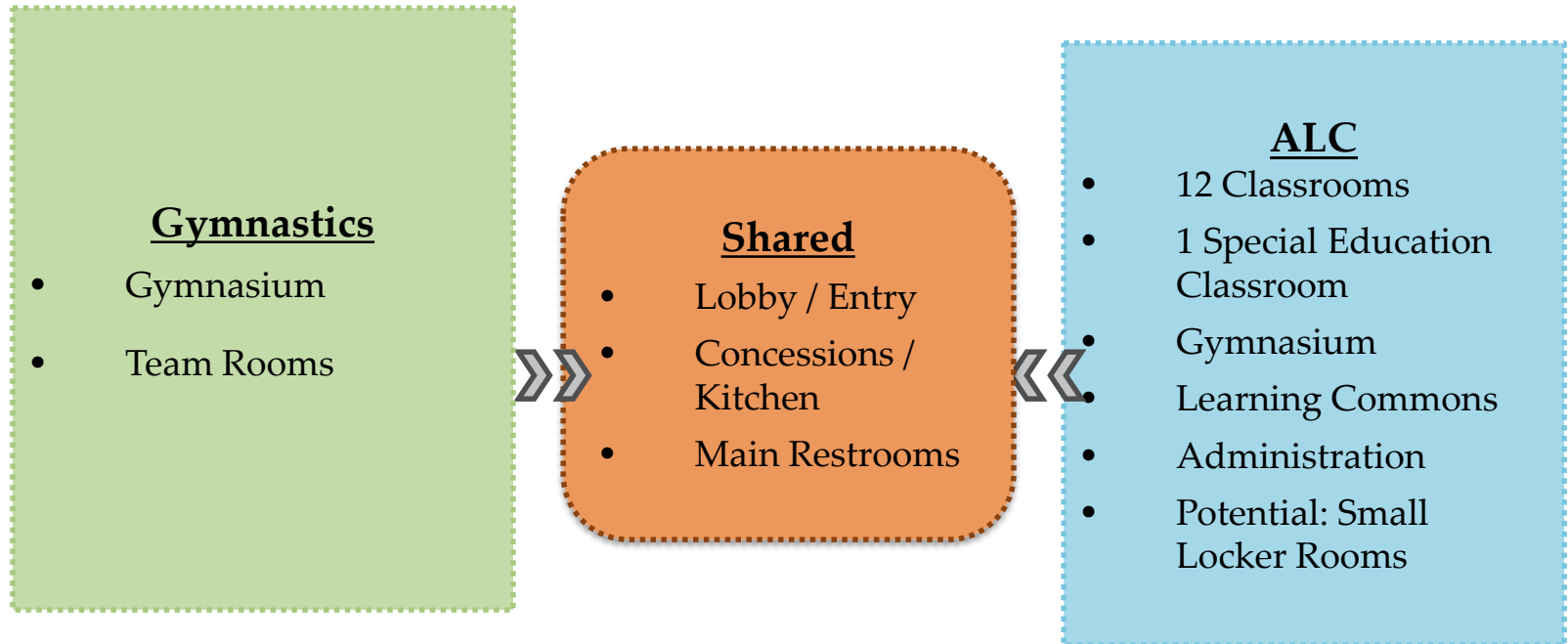
Receiving Outdoor Patio





Project Scope

Space Summary

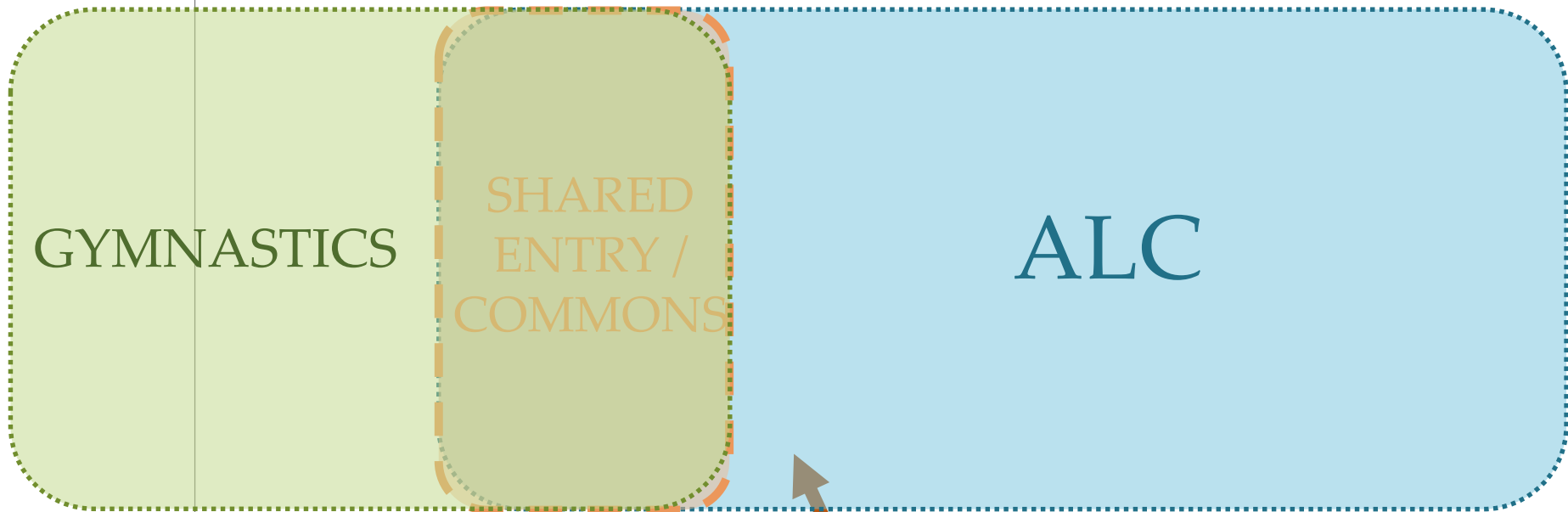




ics | CONSULTING, INC

Diagram Concept

ALC and Gymnastics



MAIN
ENTRY

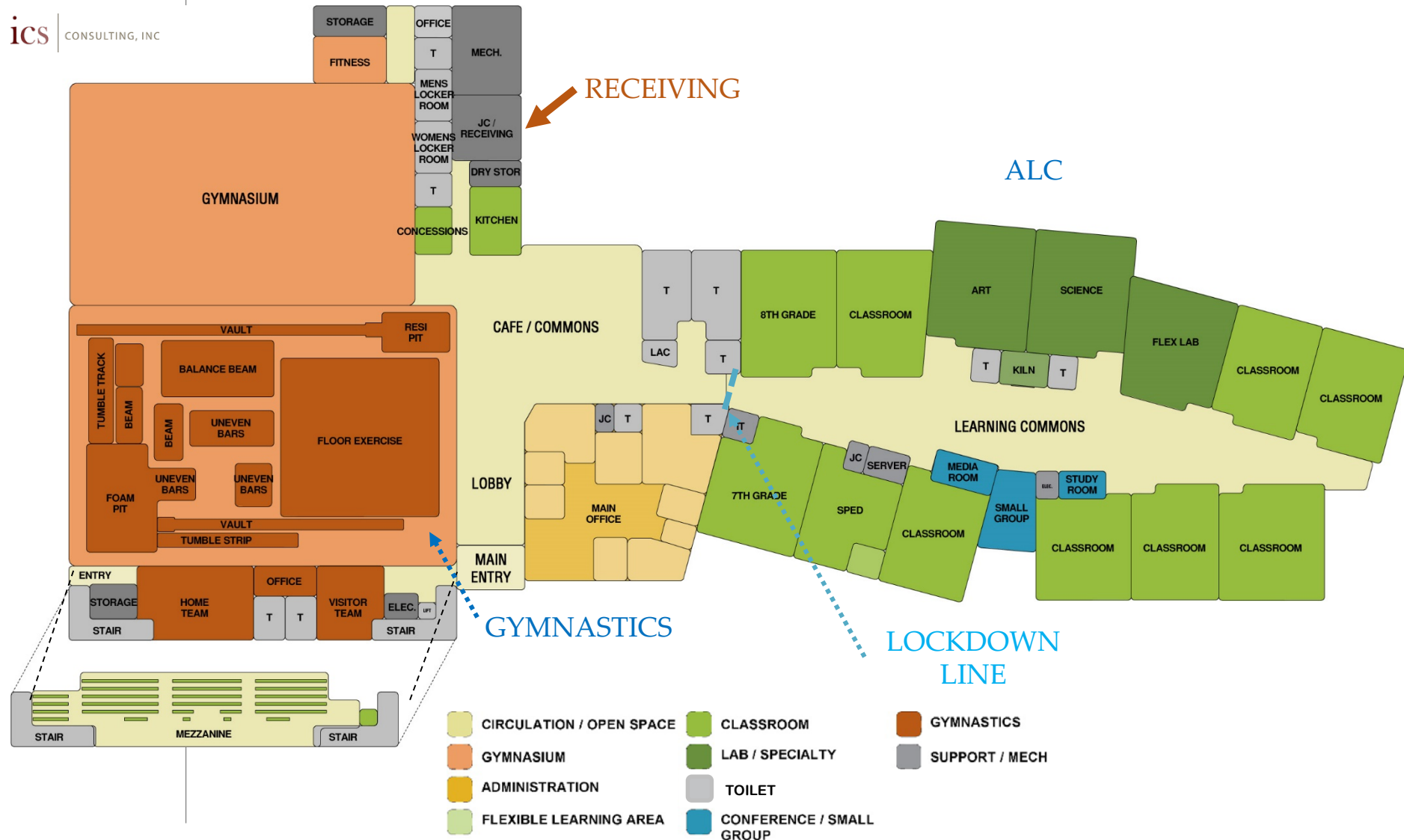




Bubble Diagram

ALC and Gymnastics

ics CONSULTING, INC

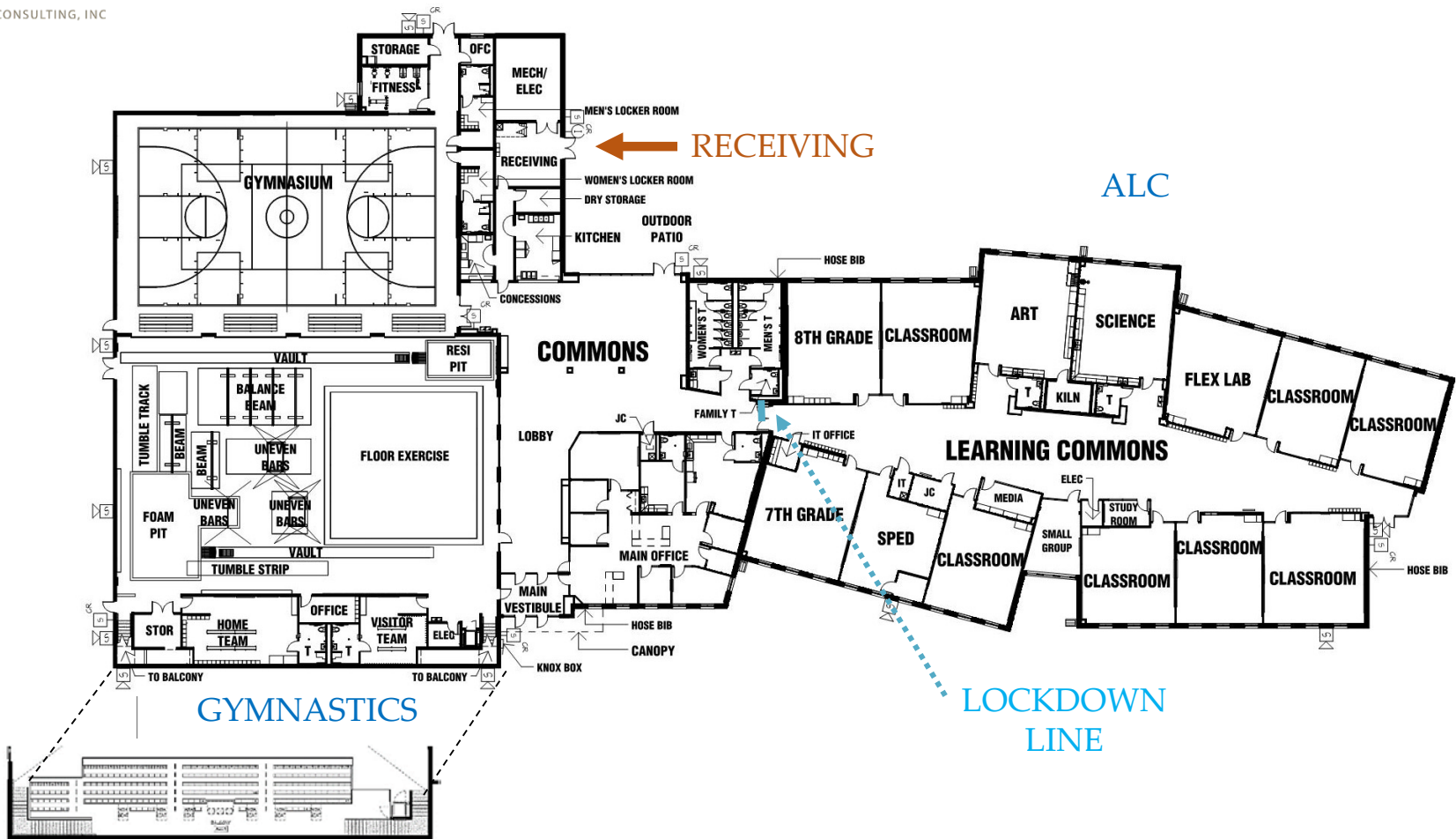




ics CONSULTING, INC

Floor Plan

ALC and Gymnastics

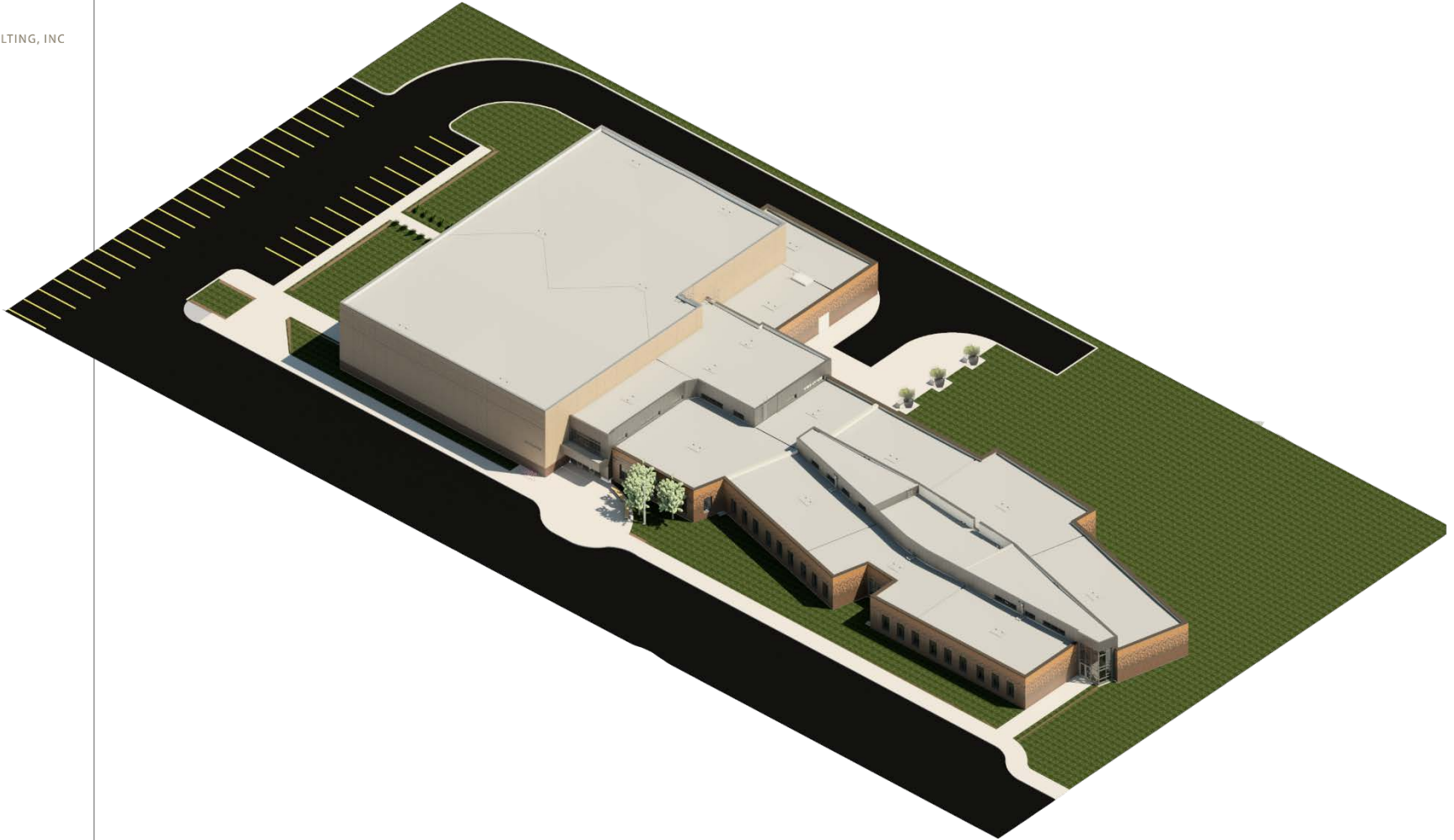




ics CONSULTING, INC

Massing Axon

ALC and Gymnastics



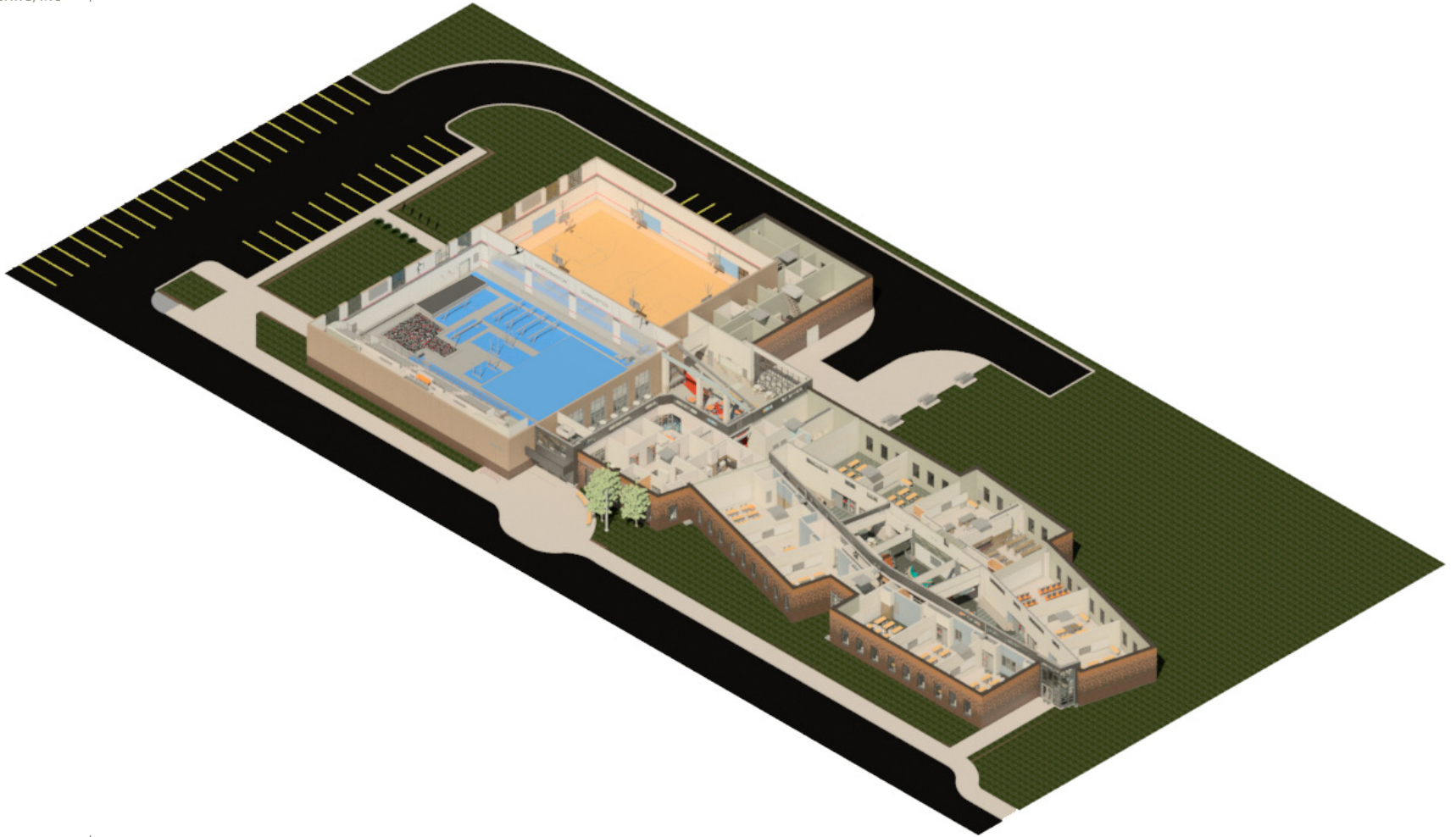
OVERALL AXON



ics | CONSULTING, INC

Massing Axon (view 2)

ALC and Gymnastics



OVERALL AXON

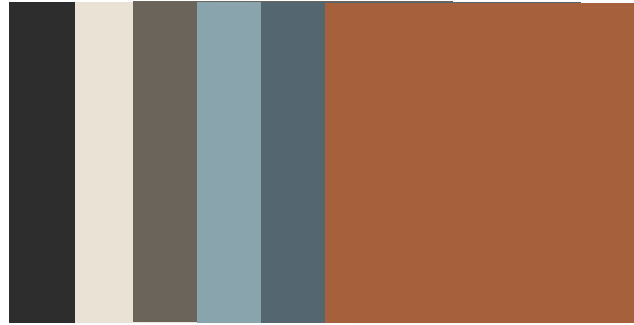


ics CONSULTING, INC

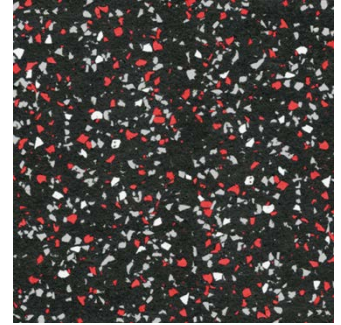
Exterior & Interior Materials



**PRECAST
CONCRETE**



PAINT



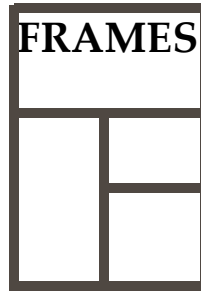
RUBBER



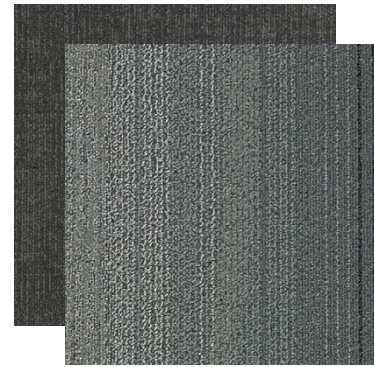
**METAL
PANEL 1**



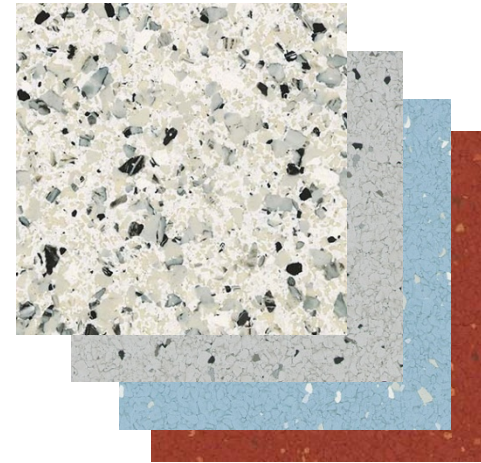
**METAL
PANEL 2**



FRAMES



CARPET



SVT



BRICK 1



BRICK 2



CASEWORK



TILE





ics CONSULTING, INC

Materials Usage

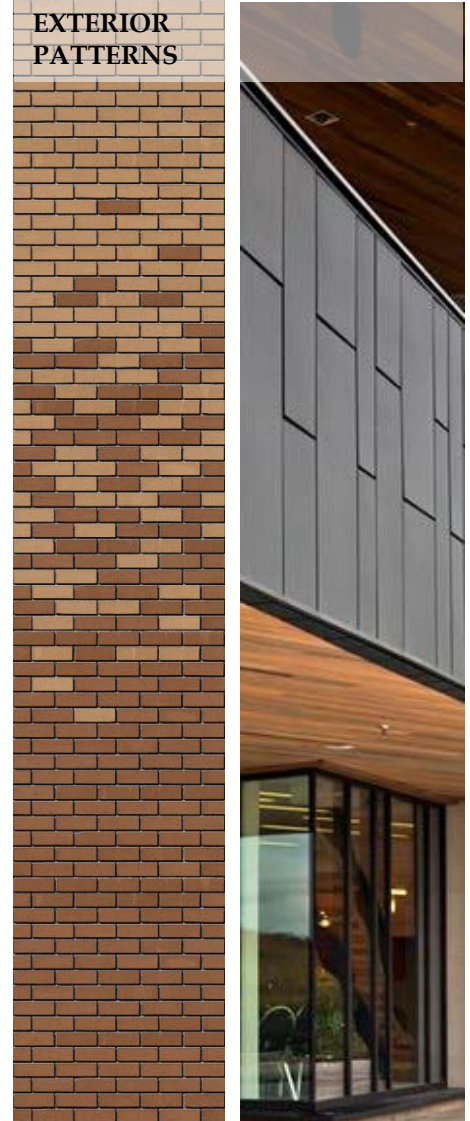


COMMONS & CLASSROOM CARPET PATTERN



TILE WAINSCOT PATTERN

EXTERIOR PATTERNS





ics | CONSULTING, INC

Main Entry Rendering

Exterior





ics | CONSULTING, INC

East End Rendering

Exterior





ics | CONSULTING, INC

North Plaza Rendering

Exterior





ics | CONSULTING, INC

Panorama Rendering

Exterior





ics CONSULTING, INC

Cafeteria Rendering

Interior





ics | CONSULTING, INC

Cafeteria Rendering (view 2)

Interior





ics CONSULTING, INC

Learning Commons

Rendering

Interior





ics | CONSULTING, INC

Learning Commons East Rendering

Interior





ics | CONSULTING, INC

Classroom Rendering

Interior





ics | CONSULTING, INC

Gymnastics Rendering

Interior





ics | CONSULTING, INC

Gymnastics Rendering (view 2)

Interior





ics | CONSULTING, INC



Gymnastics Rendering (view from Mezzanine)

Interior

